



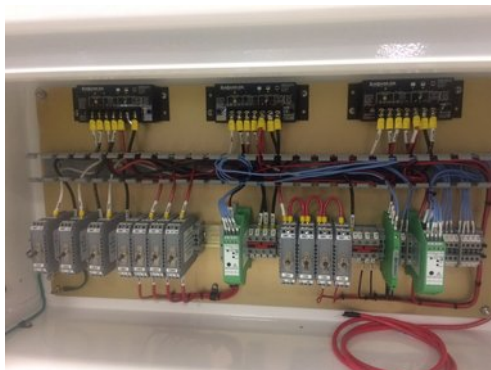
CRI Circuit Protection Products, LLC.

18002291147

sales@crippm.com

www.criexplosionproofbreakers.com

Class 1, Division 2 Circuit Breakers



- Class 1; Division 2; Groups A, B, C, and D T6 Rating Airpax 1pole Sealed Circuit Breakers installed in a Polyamide Housing suitable for DIN Rail Mounting.

- Circuit Breakers are available in the following amperages:

1, 2, 3, 5, 7.5, 10, 15, and 20

- 1A, 2A, 3A, 5A and 7.5A Circuit Breakers are rated for up to 240VAC and 50VDC. 10A and 15A Circuit Breakers are rated for up to 120VAC and 50 VDC. The 20A Circuit Breaker is rated for up to 50VDC only.

- Our Standard Product uses the Delay Curves shown below. Other delay curves are available. Please contact one of our offices for more information.

TRIP CURVE INFORMATION

Percentage of rated current vs. trip time in seconds at +25 degrees C (Vertical mount)

Delay 71 Curve (1 to 15 amp Breakers)

100% = No Trip

125% = 0.200 to 7.0

200% = 0.055 to 0.950

400% = 0.010 to 0.240

800% = 0.005 to 0.080

Delay 51 Curve (20 amp Breaker)

100% = No Trip

125% = 0.400 to 4

200% = 0.060 to 0.600

400% = 0.101 to 0.200

800% = 0.005 to 0.035



CRI Circuit Protection Products, LLC

Custom Optional Features



Our standard color for our circuit breaker housing is grey. As options they can be supplied in orange or blue as shown in the picture to the left. Note: This is the outer side cover only.

The breakers come standard with the "On Off" Toggle style handle in a housing suitable for DIN Rail mounting.

We have two optional switch guards available as shown on the other side, Black (p/n 8492K1) and Stainless Steel (p/n CRISG).

Approvals

The complete assembly is FM approved nonincendive for Class I, Div. 2, Groups A, B, C, D hazardous locations File #3054896.

The Airpax breakers that we mount in the DIN Rail housings also carry the following approvals:

FM File #3018851 UL 1077 File #E66 410 CSA 22.2 No. 235 File #LR26220



Features of the Product

- Electrical Characteristics of the Housing
AWG Screw Clamp (20 to 12 AWG) (0 to 2.5mm STR)
Wire stripping length 7mm Screw driver 3.5mm
- Mechanical Characteristics of the Housing
Body Polyamide UL 94.V2
Working temperature 40 to +100 degrees C
- The Housing is to be mounted on DIN Rail
EN50022 35 X 7.5 or 35 X 15 (Steel or Aluminum) or 35 Elevated Aluminum Rail.
- The housing provides two parallel line and two parallel load terminations. All circuit breakers also have Ground terminations. Marking Tags are provided.
- Dimensions 4.75" (H) X 3.00" (W) X 1.00" (D)

PART NUMBERS

- CRIAPBM1 (1A,240VAC/50VDC)
- CRIAPBM2 (2A,240VAC/50VDC)
- CRIAPBM3 (3A,240VAC/50VDC)
- CRIAPBM5 (5A,240VAC/50VDC)
- CRIAPBM7.5 (7.5A,240VAC/50VDC)
- CRIAPBM10 (10A,120VAC/50VDC)
- CRIAPBM15 (15A,120VAC/50VDC)
- CRIAPBM20 (20A,50VDC)

